

Glass Nebulizers

SeaSpray400 μ L/min uptake[ARG-1-USS04](#)**MicroMist**400 μ L/min uptake[ARG-1-UM04](#)200 μ L/min uptake[ARG-1-UM02](#)100 μ L/min uptake[ARG-1-UM01](#)50 μ L/min uptake[ARG-1-UM005](#)

Nebulizers suitable for use with HF

OpalMist400 μ L/min uptake[ARG-1-PFA04](#)200 μ L/min uptake[ARG-1-PFA02](#)100 μ L/min uptake[ARG-1-PFA01](#)50 μ L/min uptake[ARG-1-PFA005](#)

IsoMist

IsoMist Programmable Temperature Spray Chamber for PerkinElmer NexION

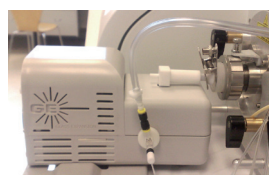
With glass spray chamber

[KT-1096](#)

With quartz spray chamber

[KT-1096Q](#)

With PFA spray chamber

[KT-1096P](#)

Spray Chambers

Twister50mL Cyclonic with Aux Port [20-809-3594HE](#)**Twinnabar**20mL Cyclonic [20-809-3650HE](#)**Cinnabar**20mL Cyclonic [20-809-3709HE](#)

Torches

D-Torch with Quartz Outer Tube[30-807-0540](#)

Comprises:

Base and Inner Tube

[31-808-2847](#)

Quartz Outer Tube

[31-808-2848](#)

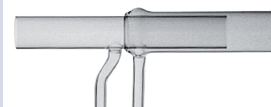
Retaining Ring

[31-808-2818](#)**Ceramic Outer Tube for D-Torch**[31-808-2849](#)**Quartz Torch**

Standard Quartz Torch

[30-808-8107](#)

High Efficiency Quartz Torch

[31-808-2784](#)**Quartz Injectors (non DRC)**Tapered Quartz Injector 1.0mm [31-808-0370](#)Tapered Quartz Injector 1.2mm [31-808-0789](#)Tapered Quartz Injector 1.5mm [31-807-0006](#)Tapered Quartz Injector 1.8mm [31-807-0005](#)Tapered Quartz Injector 2.0mm [31-807-0004](#)

These injectors are compatible with both D-Torch and standard torch. They are suitable for torch adaptor [31-808-2825](#) (equivalent PerkinElmer P/N W1013266).

**Quartz Injectors (DRC Versions)**Tapered Quartz Injector with Ball Joint, 2.0mm [31-808-0806](#)Tapered Quartz Injector with Ball Joint, 1.5mm [31-808-0851](#)Tapered Quartz Injector with Ball Joint, 0.85mm [31-808-3125](#)

These injectors are compatible with both D-Torch and standard torch. They are suitable for torch adaptor [31-808-2824](#) (equivalent PerkinElmer P/N W1012406).

**Torch Adaptor**

Cassette Mount Adaptor for Ball Joint Injector

[31-808-2824](#)

This adaptor is suitable for injectors with a ball joint.

**Torch Adaptor**PFA Cassette Mount Adaptor [31-808-2825](#)

This adaptor is suitable for injectors without a ball joint.



PerkinElmer ICP-MS: NexION 300

Torches (continued)

HF Resistant Injectors

Tapered Alumina Injector 1.5mm [31-807-0044](#)

Tapered Alumina Injector 1.8mm [31-807-0045](#)

Tapered Alumina Injector 2.0mm [31-807-0060](#)

Sapphire Injector 2.0mm [31-808-2803](#)

Platinum Injector 2.0mm [31-808-2972](#)

These injectors are compatible with both D-Torch and standard torch. They are suitable for torch adaptor [31-808-2825](#) (equivalent PerkinElmer P/N W1013266).

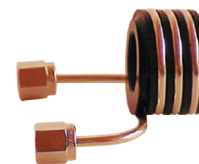


RF Coils

RF Coil for Elan/NexION

Copper

[70-900-2006C](#)



Installation Kit for Elan/NexION

RF Coil Installation Kit

[70-900-2006T](#)



Cones

Nickel Sampler

(PE p/n W1033612)

[PE3011-Ni](#)



Nickel Skimmer

(PE p/n W1026356)

[PE3012-Ni](#)



Platinum Sampler

(PE p/n W1033614)

[PE3013-Pt](#)



Platinum Skimmer

(PE p/n W1026907)

[PE3014-Pt](#)



Hyper Skimmer

(PE p/n W1033995)

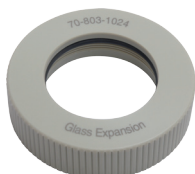
[PE3015-Al](#)



ConeGuard Thread Protectors

ConeGuard, Sampler for NexION

[70-803-1024](#)



ConeGuard, Skimmer for NexION

[70-803-1026](#)

