

Glass Nebulizers

SeaSpray

400µl/min uptake [ARG-1-USS04X](#)

MicroMist

400µl/min uptake [ARG-1-UM04X](#)

200µL/min uptake [ARG-1-UM02X](#)

100µl/min uptake [ARG-1-UM01Q](#)

50µl/min uptake [ARG-1-UM005Q](#)



Nebulizers suitable for use with HF

OpalMist

400µl/min uptake [ARG-1-PFA04X](#)

200µl/min uptake [ARG-1-PFA02X](#)

100µl/min uptake [ARG-1-PFA01Q](#)

50µl/min uptake [ARG-1-PFA005Q](#)



Peltier Controlled Spray Chambers

PCC Spray Chamber for Agilent 7500

With glass spray chamber [KT-1109](#)

With quartz spray chamber [KT-1109Q](#)

With PFA spray chamber [KT-1109P](#)

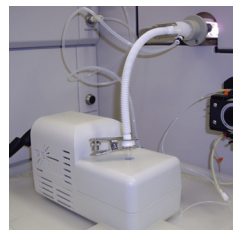


IsoMist Programmable Temperature Spray Chamber for Agilent 7500

With glass spray chamber [KT-1010](#)

With quartz spray chamber [KT-1010Q](#)

With PFA spray chamber [KT-1010P](#)



Spray Chambers

Twister with Aux. Port

50mL Cyclonic [20-809-2574HE](#)

Requires adaptor kit KT-1006.



Tracey PFA44 with Aux. Port

44mL Cyclonic [20-809-2578](#)

Suitable for use with HF.

Requires adaptor kit KT-1006.



Adaptor Kit

Adaptor Kit [KT-1006](#)



Torches

D-Torch

[30-808-3015](#)

Comprises:

Base and Inner Tube [31-808-3196](#)

Quartz Outer Tube [31-808-3022](#)

Injector Adaptor [31-808-3072](#)

Injector Ferrule [31-808-2962](#)

Quartz Connector [31-808-3198](#)



Options:

Tapered Quartz Injector 2.5mm [31-808-3302](#)

Tapered Alumina Injector 2.4mm [31-808-3205](#)

Sapphire Injector 2.4mm [31-808-3378](#)

PFA Connector [31-808-3379](#)



Semi Demountable Torch

[30-808-3068](#)

Comprises:

Torch Body, Quartz [31-808-3051](#)

Torch Adaptor [31-808-3067](#)

Tapered Quartz Injector 2.4mm [31-808-0773](#)

GazFit Connectors (PKT 4) [GAZ-0604](#)



Fixed Torch for 7500

Quartz Torch, 2.5mm Injector, 2 Projections, HMI compatible [30-807-0542](#)

Standard Quartz Torch, 2.5mm Injector [30-808-0816](#)

Standard Quartz Torch, 1.5mm Injector [30-808-1211](#)

Standard Quartz Torch, 1.0mm Injector [30-807-0516](#)



Quartz Injectors For Semi Demountable Torch

Tapered Quartz Injector 1.5mm [31-808-0771](#)

Tapered Quartz Injector 1.8mm [31-808-0772](#)

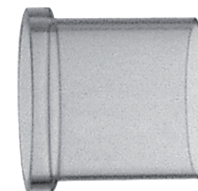
Tapered Quartz Injector 2.4mm [31-808-0773](#)

Capillary Quartz Injector 4.0mm [31-808-2502](#)



Bonnet

Quartz Torch Bonnet [31-808-2577](#)



Connector

Quartz Connector [31-808-2799](#)



Agilent ICP-MS: 7500

Torches (continued)

Semi Demountable Torch with Alumina Injector

[30-808-3069](#)

Comprises:

Torch Body, Quartz [31-808-3051](#)

Torch Adaptor [31-808-3067](#)

Tapered Alumina Injector 2.4mm [31-808-0776](#)

GazFit Connectors (PKT 4) [GAZ-0604](#)



HF-resistant Injectors for Semi Demountable Torch

Tapered Alumina Injector 1.5mm [31-808-0774](#)

Tapered Alumina Injector 1.8mm [31-808-0775](#)

Tapered Alumina Injector 2.4mm [31-808-0776](#)

Sapphire Injector 2.4mm [31-808-2580](#)



RF Coils

RF Coil

Gold [70-900-7500G](#)



RF Coil

Silver [70-900-7500S](#)



Installation Kit

Installation Kit [70-900-7500T](#)



Cones

Nickel Sampler

(Agilent p/n G1820-65238) [AT1001-Ni](#)



Nickel Skimmer - 4500, 7500a

(Agilent p/n G1820-65265, G1820-65050) [AT1002-Ni](#)



Platinum Sampler, 10mm Insert

(Agilent p/n G1820-65239) [AT1006-Pt](#)



Platinum Skimmer

(Agilent p/n G1820-65237) [AT1008-Pt](#)



Cones (continued)

Nickel Skimmer - 7500c

(Agilent p/n G1833-65497) [AT1002C-Ni](#)



Platinum Skimmer - 7500c

(Agilent p/n G1833-65092) [AT1008C-Pt](#)



Nickel Sampler - T-mode

(Agilent p/n G1820-65480) [AT1001T-Ni](#)



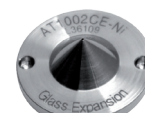
Nickel Skimmer - T-mode

(Agilent p/n G1820-65481) [AT1002T-Ni](#)



Nickel Skimmer - 7500ce

(Agilent p/n G3270-65024) [AT1002CE-Ni](#)



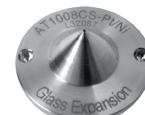
Platinum Skimmer, Copper Base - 7500cs, 7500ce

(Agilent p/n G1883-65132) [AT1008CS-Pt](#)



Platinum Skimmer, Nickel Base, 7500cs, 7500ce

(Agilent p/n G3270-60106) [AT1008CS-Pt/Ni](#)



Long Life Shield Plate, 7500/7700

(Agilent p/n G1833-65419) [AT5004](#)



ConeGuard Thread Protectors

ConeGuard, Sampler for Agilent 4500/7500

[70-803-1000](#)



ConeGuard, Skimmer for Agilent 4500/7500

[70-803-1002](#)



ConeGuard, Skimmer for Agilent 7500c/ce/cs

[70-803-1004](#)

